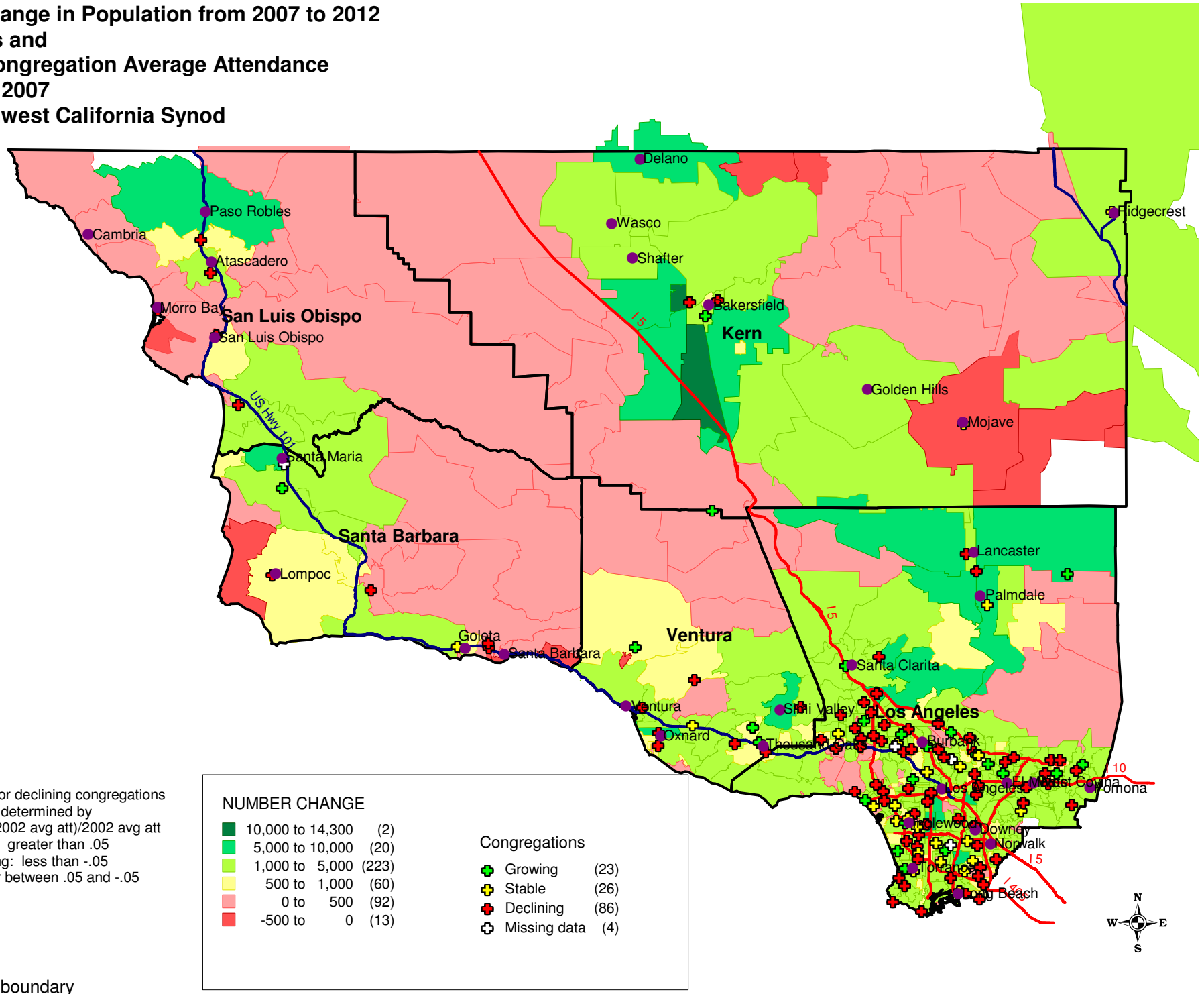


**Projected Change in Population from 2007 to 2012  
by ZIP Codes and  
Change in Congregation Average Attendance  
from 2002 to 2007  
for the Southwest California Synod**



\*Growing, stable or declining congregations were determined by  $(2007 \text{ avg att} - 2002 \text{ avg att}) / 2002 \text{ avg att}$   
 Growth: greater than .05  
 Declining: less than -.05  
 Stable: at or between .05 and -.05

NUMBER CHANGE		Congregations	
10,000 to 14,300	(2)	+	Growing (23)
5,000 to 10,000	(20)	+	Stable (26)
1,000 to 5,000	(223)	+	Declining (86)
500 to 1,000	(60)	+	Missing data (4)
0 to 500	(92)		
-500 to 0	(13)		

— County boundary



