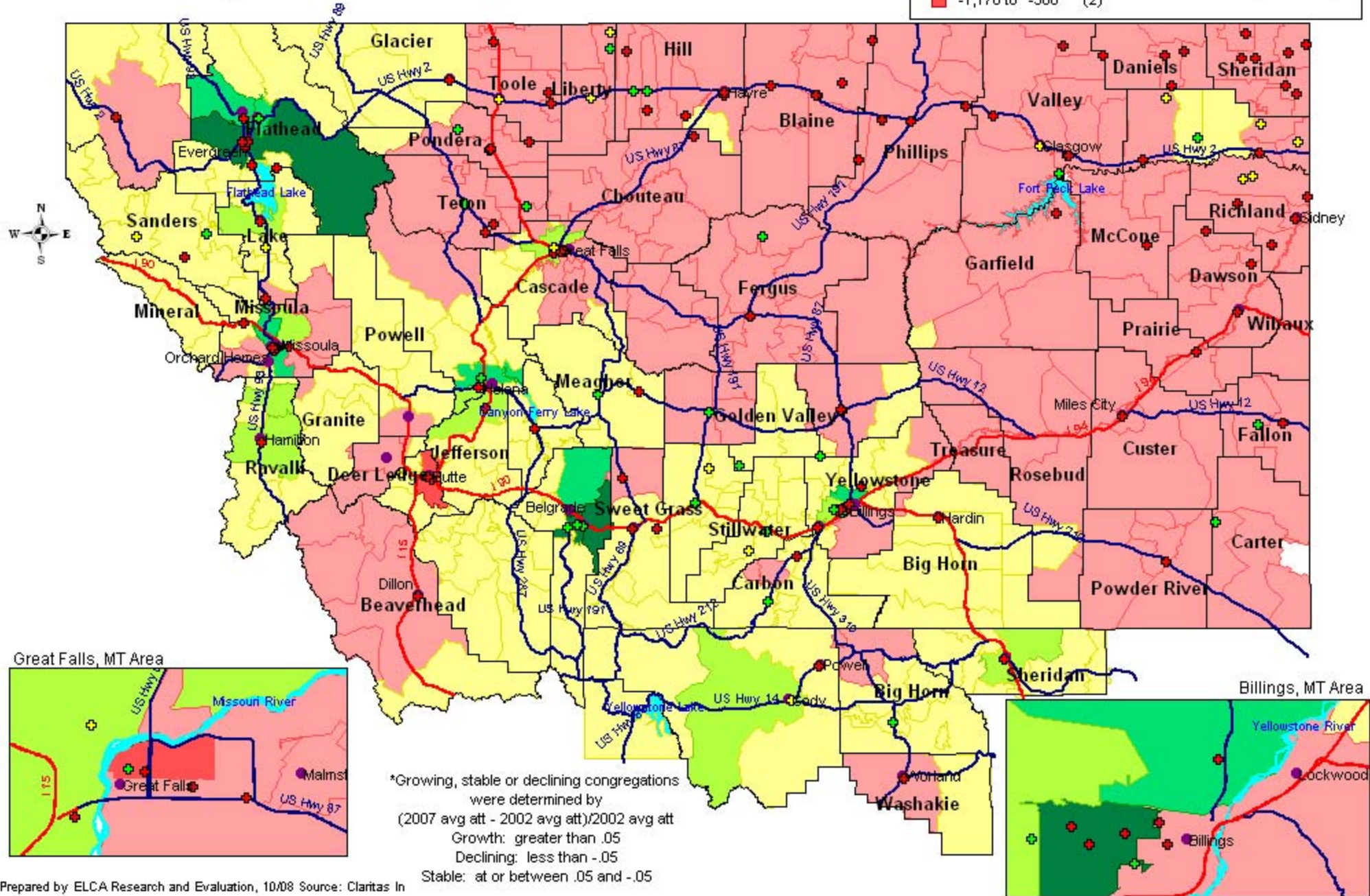


Projected Change in Population from 2007 to 2012 by ZIP Codes and Change in Congregation Average Attendance from 2002 to 2007 for the Montana Synod

NUMBER CHANGE		Congregations	
Dark Green	2,500 to 4,790 (4)	Green Circle	Growing (28)
Light Green	1,000 to 2,500 (8)	Yellow Circle	Stable (18)
Yellow	500 to 1,000 (11)	Red Circle	Declining (100)
Light Yellow	0 to 500 (153)	Black Line	County boundary
Pink	-500 to 0 (166)		
Red	-1,170 to -500 (2)		



*Growing, stable or declining congregations were determined by
 $(2007 \text{ avg att} - 2002 \text{ avg att}) / 2002 \text{ avg att}$
 Growth: greater than .05
 Declining: less than -.05
 Stable: at or between .05 and -.05