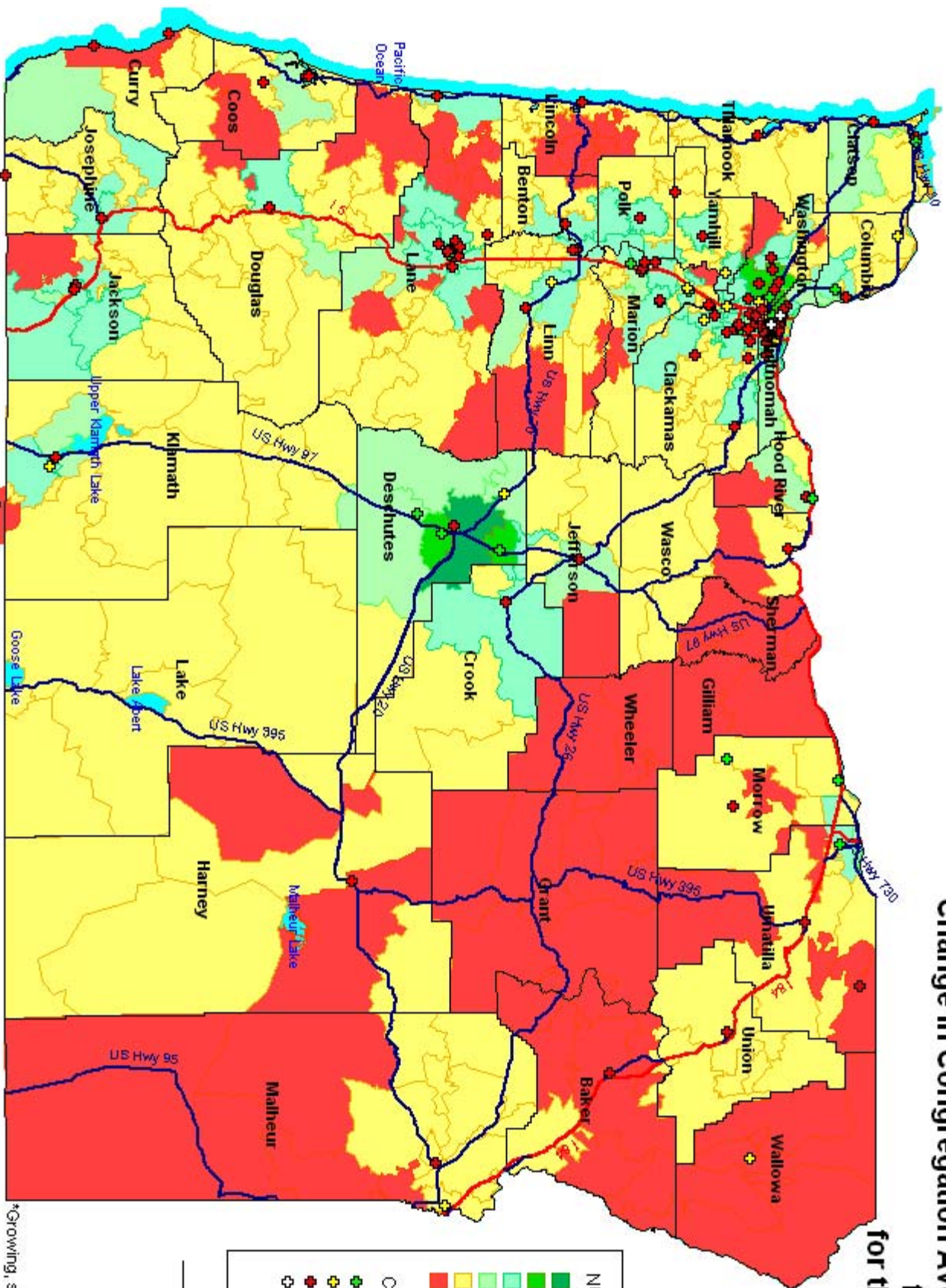


Projected Change in Population from 2009 to 2014 by ZIP Codes and Change in Congregation Average Attendance from 2003 to 2008 for the Oregon Synod



NUMBER CHANGE	
10,000 to 11,600	(1)
5,000 to 10,000	(7)
1,000 to 5,000	(70)
500 to 1,000	(29)
0 to 500	(210)
-200 to 0	(83)

Congregations	
Green circle	Growing (17)
Yellow circle	Stable (16)
Red circle	Declining (86)
Red circle with cross	Missing or other data (2)

— County boundary

*Growing, stable or declining congregations were determined by (2008 avg att - 2003 avg att)/2003 avg att
 Growth: greater than .05
 Declining: less than -.05
 Stable: at or between .05 and -.05

**Projected Change in Population from 2009 to 2014
by ZIP Codes and
Change in Congregation Average Attendance
from 2003 to 2008
for the Oregon Synod
Portland Area**

