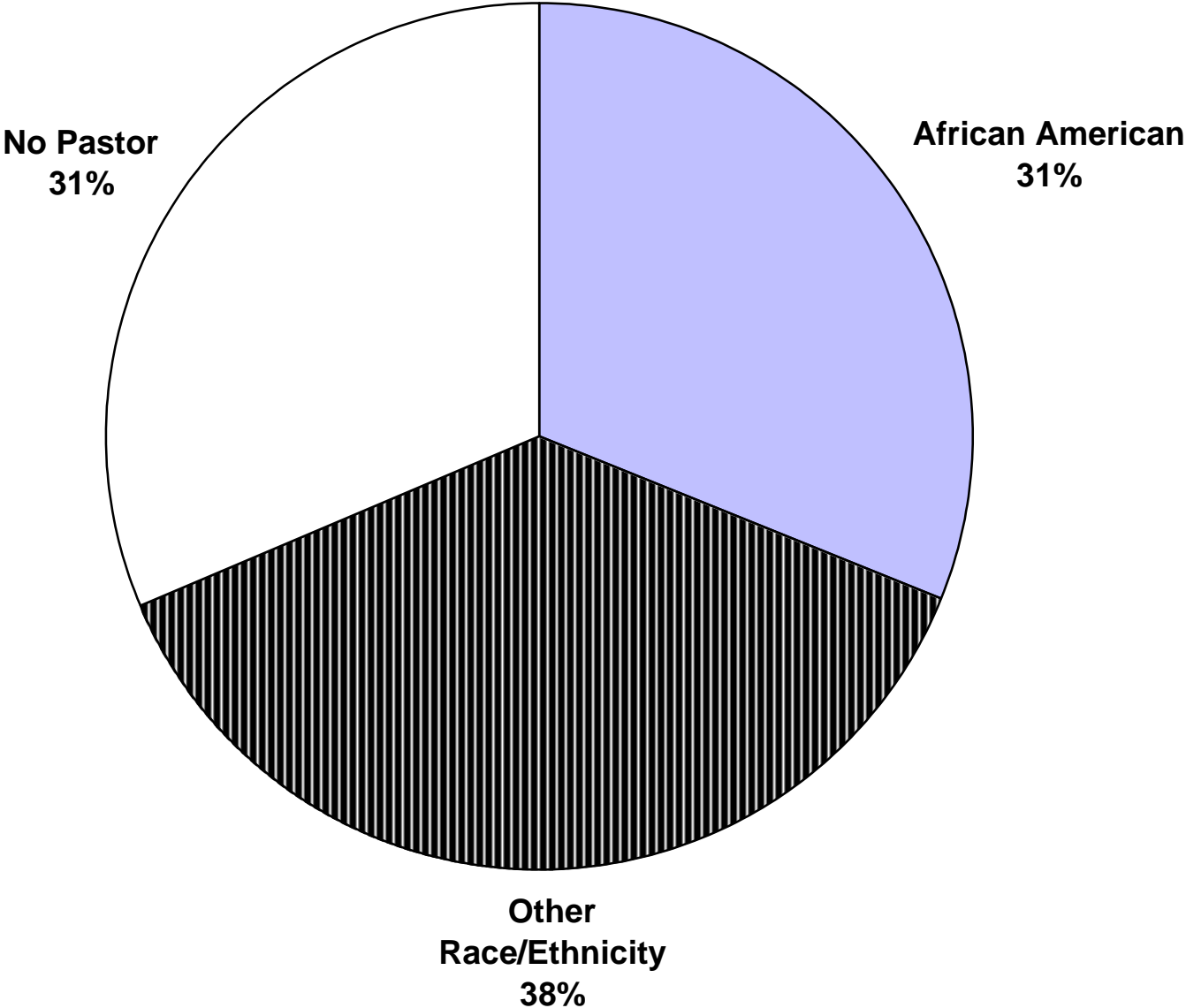
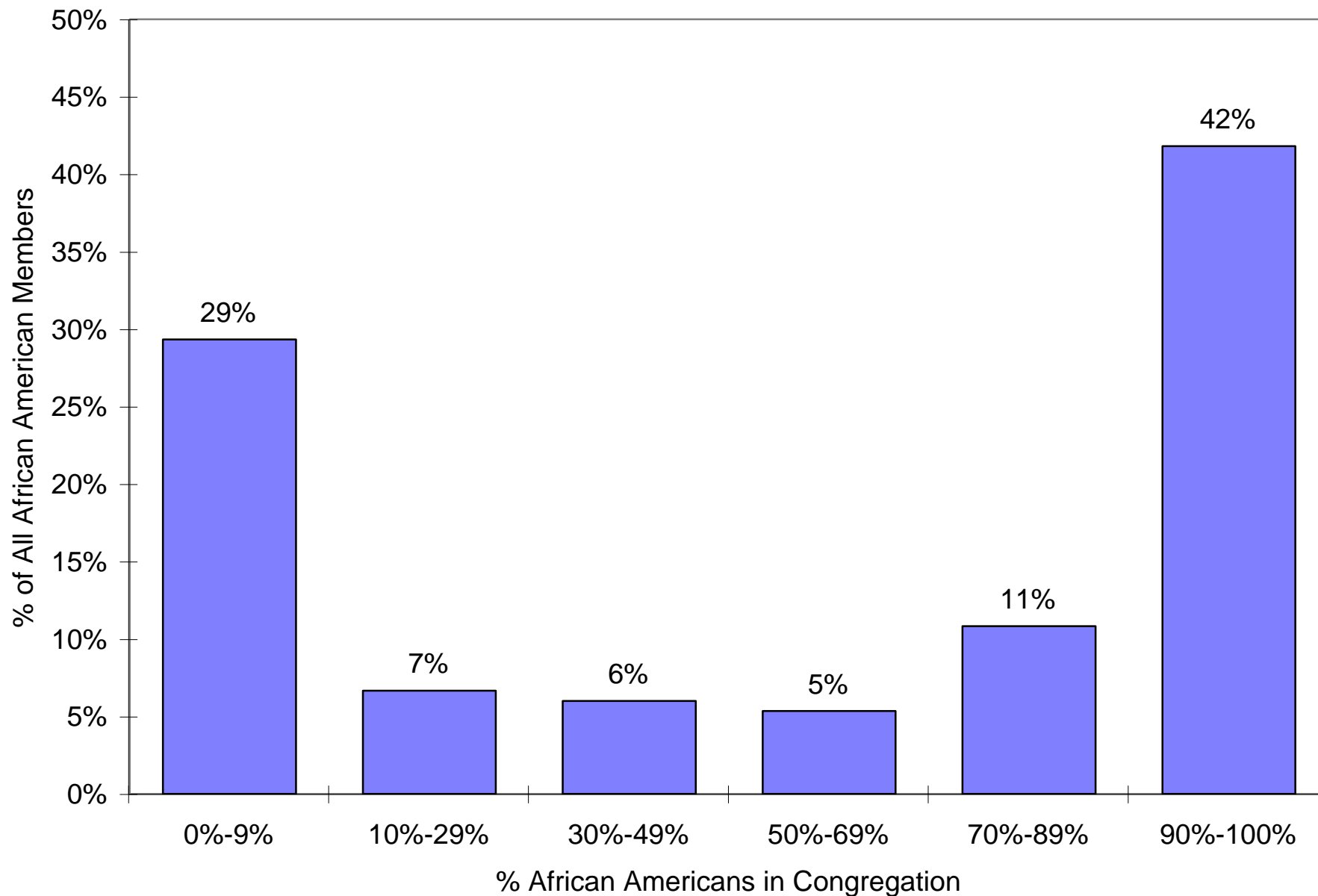


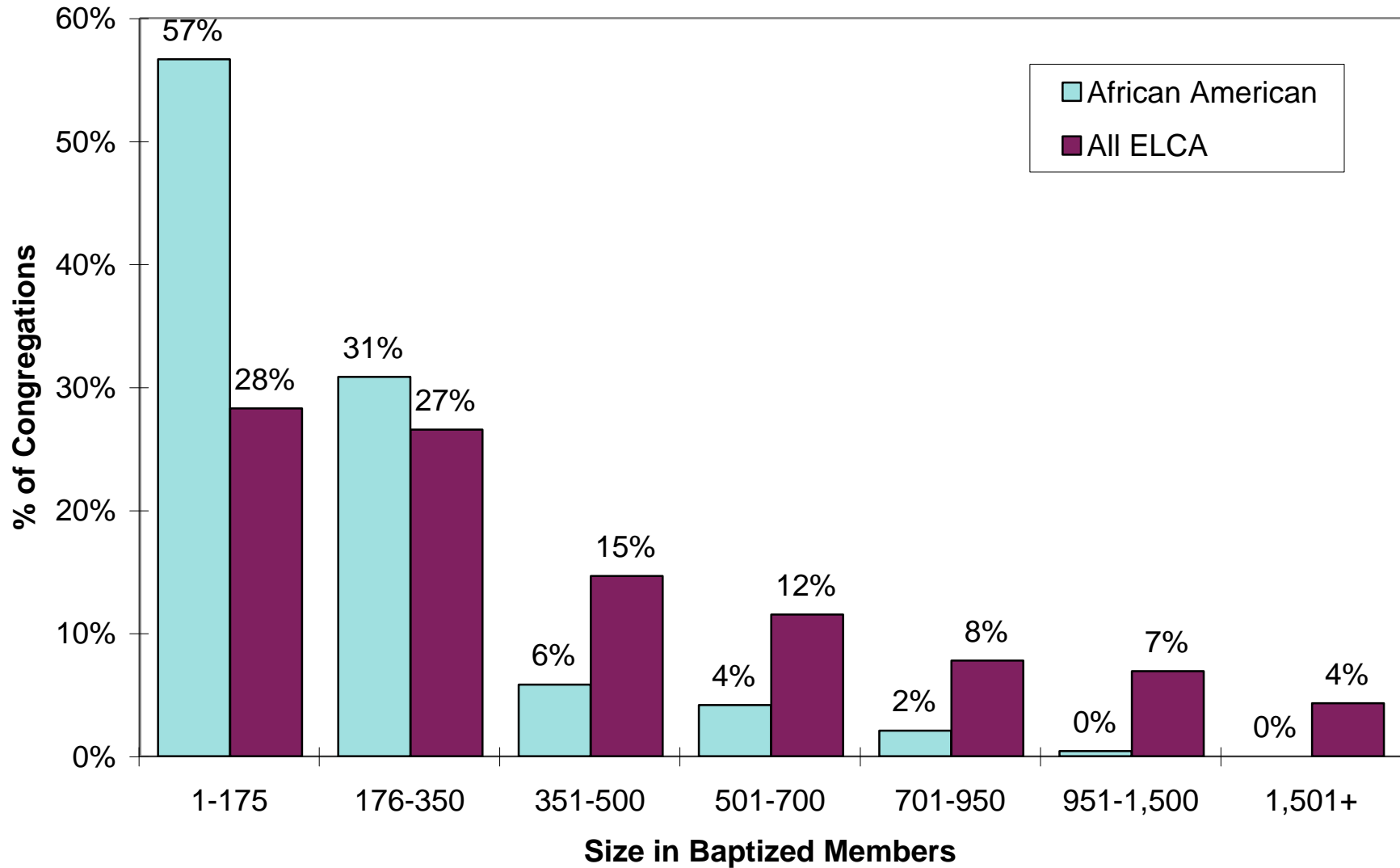
Pastors of African American Congregations - September, 2003



How Diverse Are the Congregations in Which 54,398 ELCA African American/Black Members Are Found?

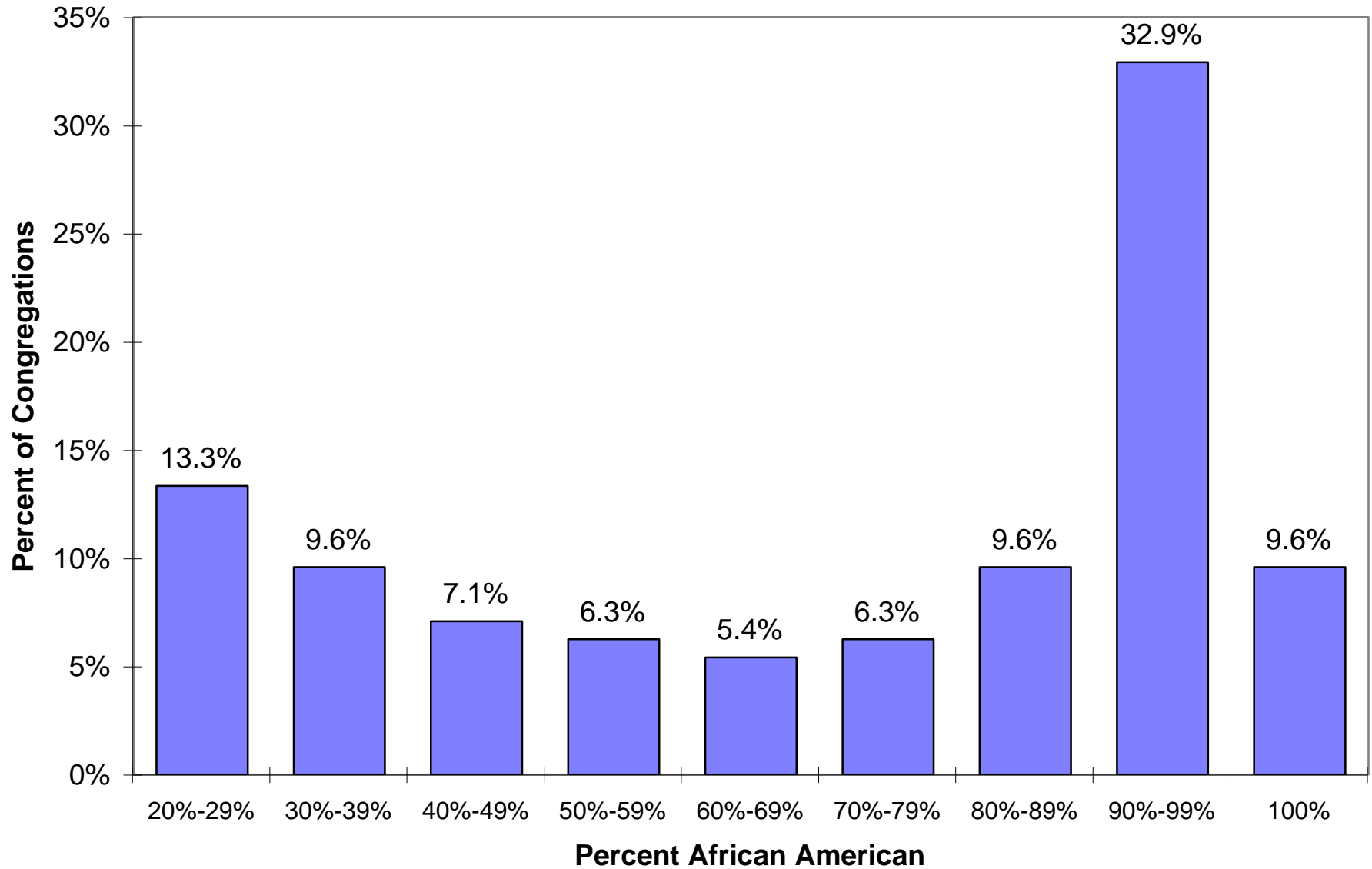


2002 Size of 240 ELCA African American Congregations and All ELCA Congregations

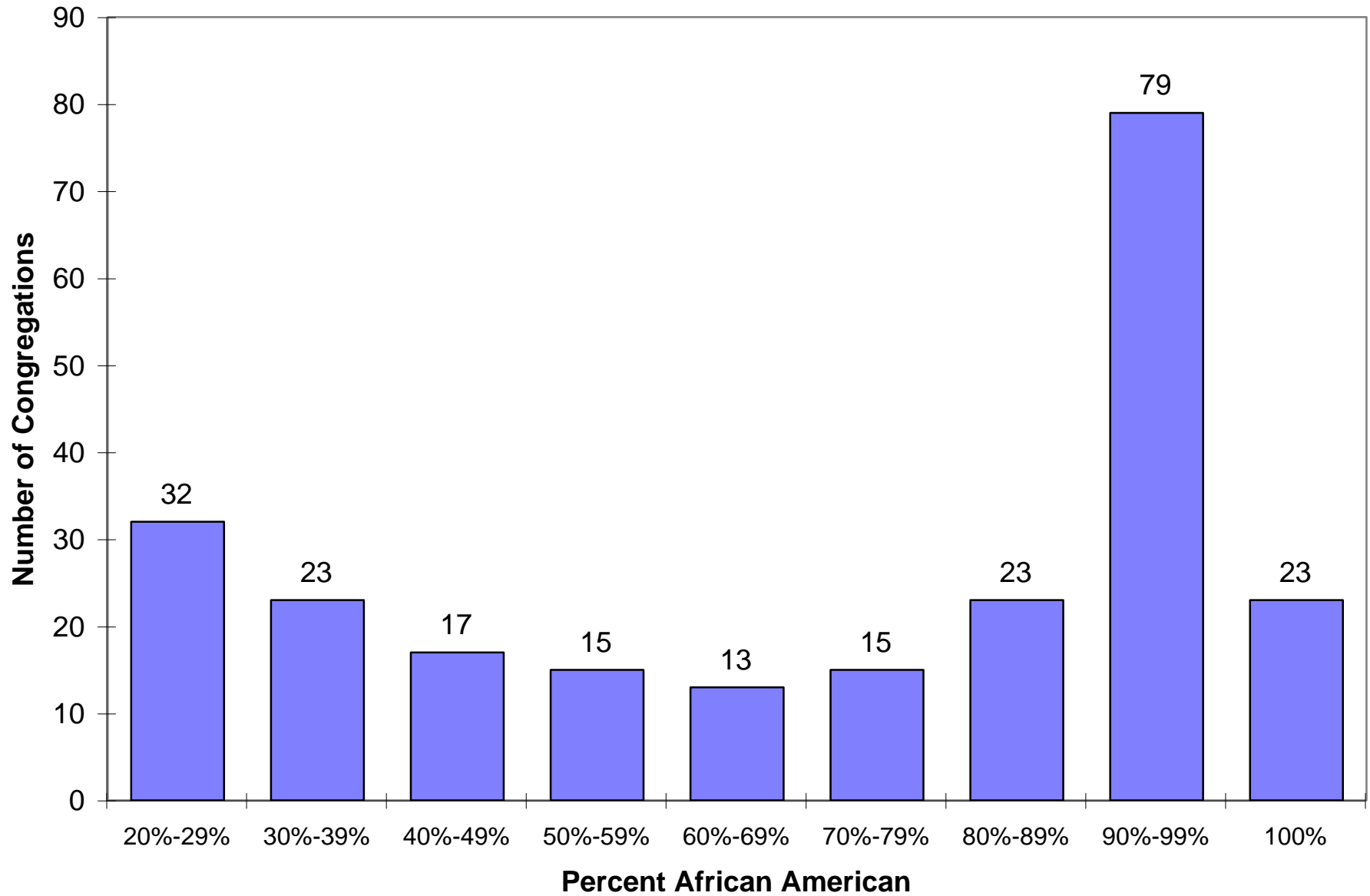


The average size of African American congregations is 204 compared with 474 for the whole ELCA.

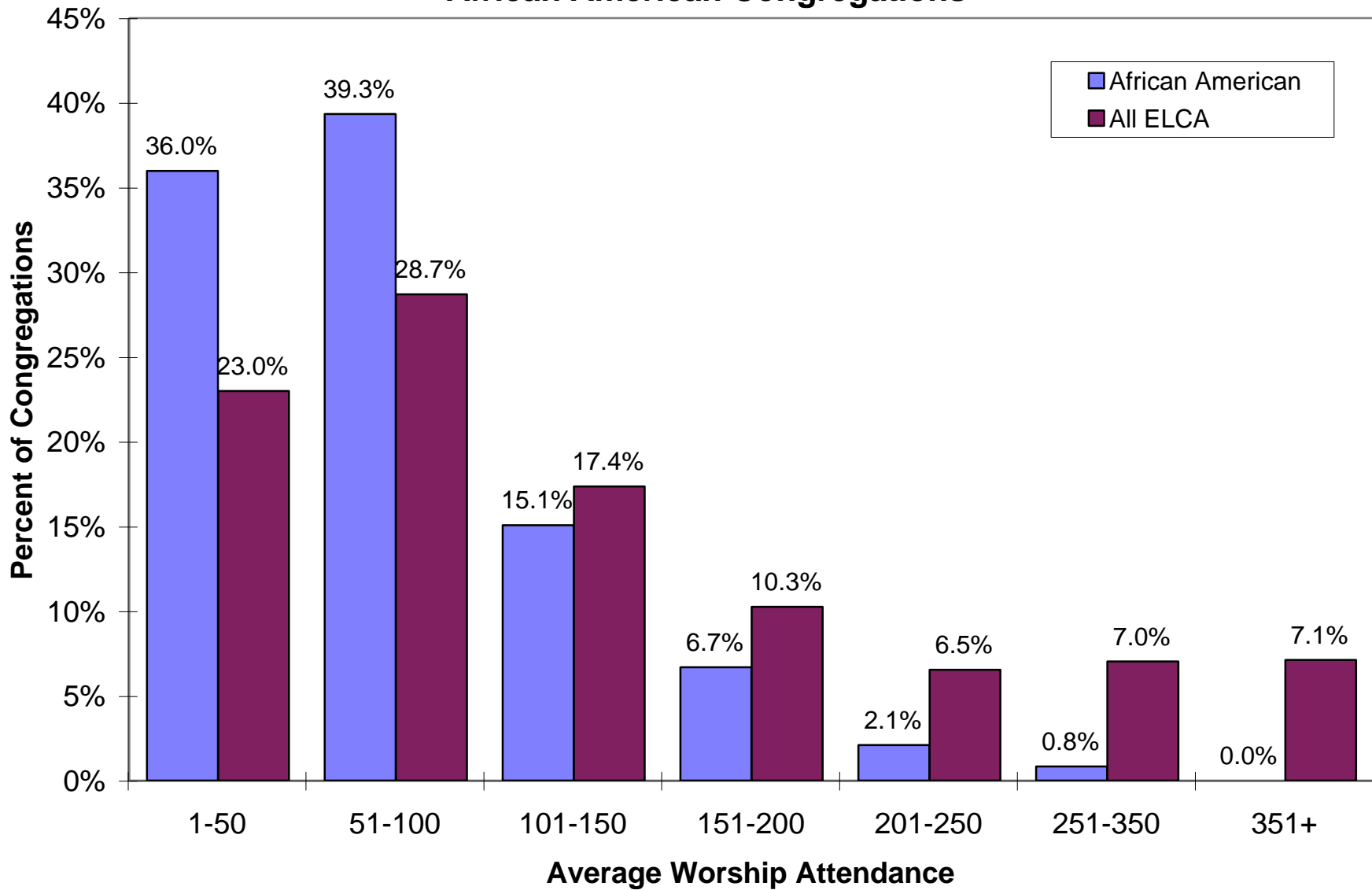
Percent of African American Congregations by 2002 % African American Membership in These 240 Congregations



Number of African American Congregations by 2002 % African American Membership in These 240 Congregations

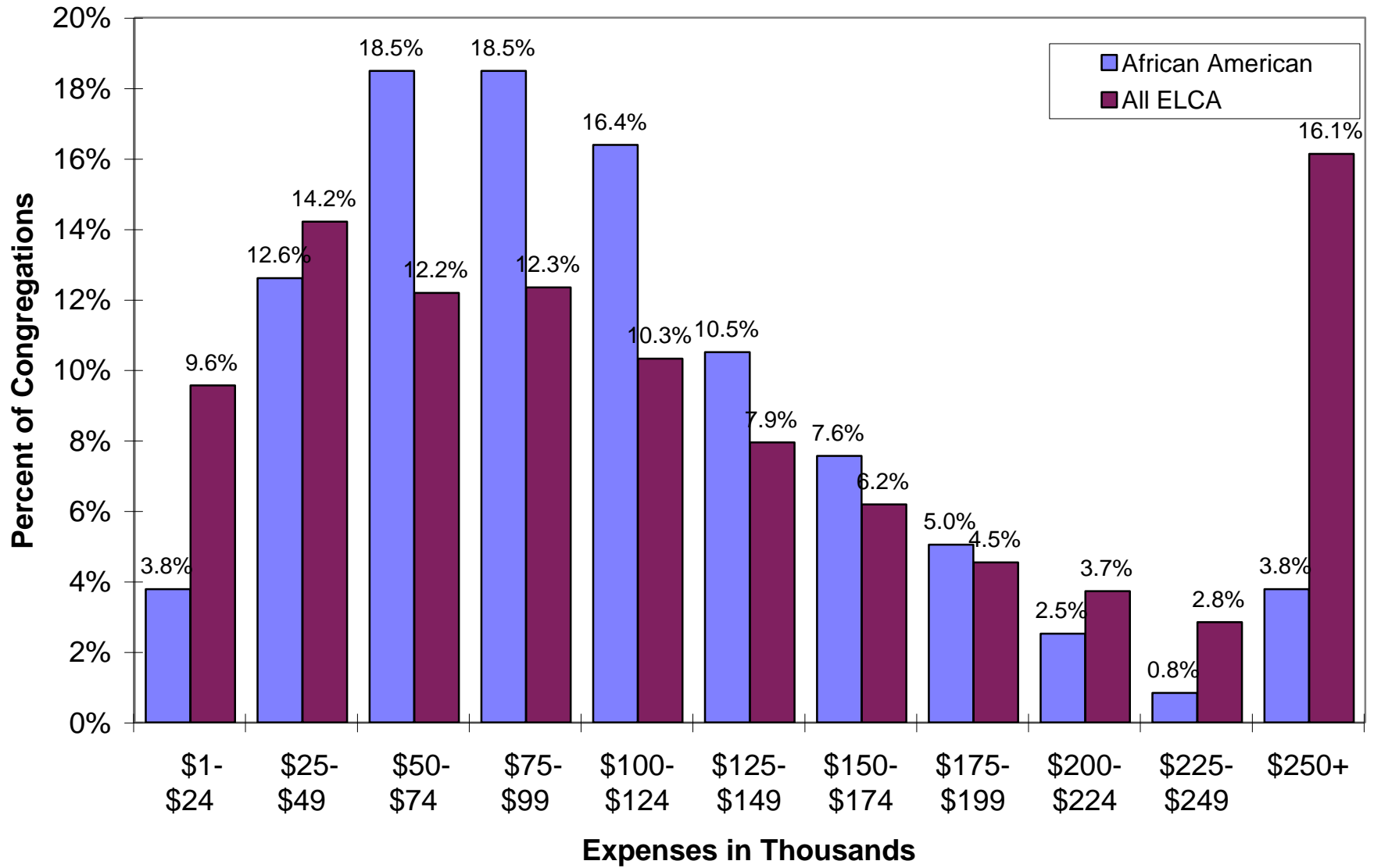


2002 Average Worship Attendance of 240 ELCA African American Congregations



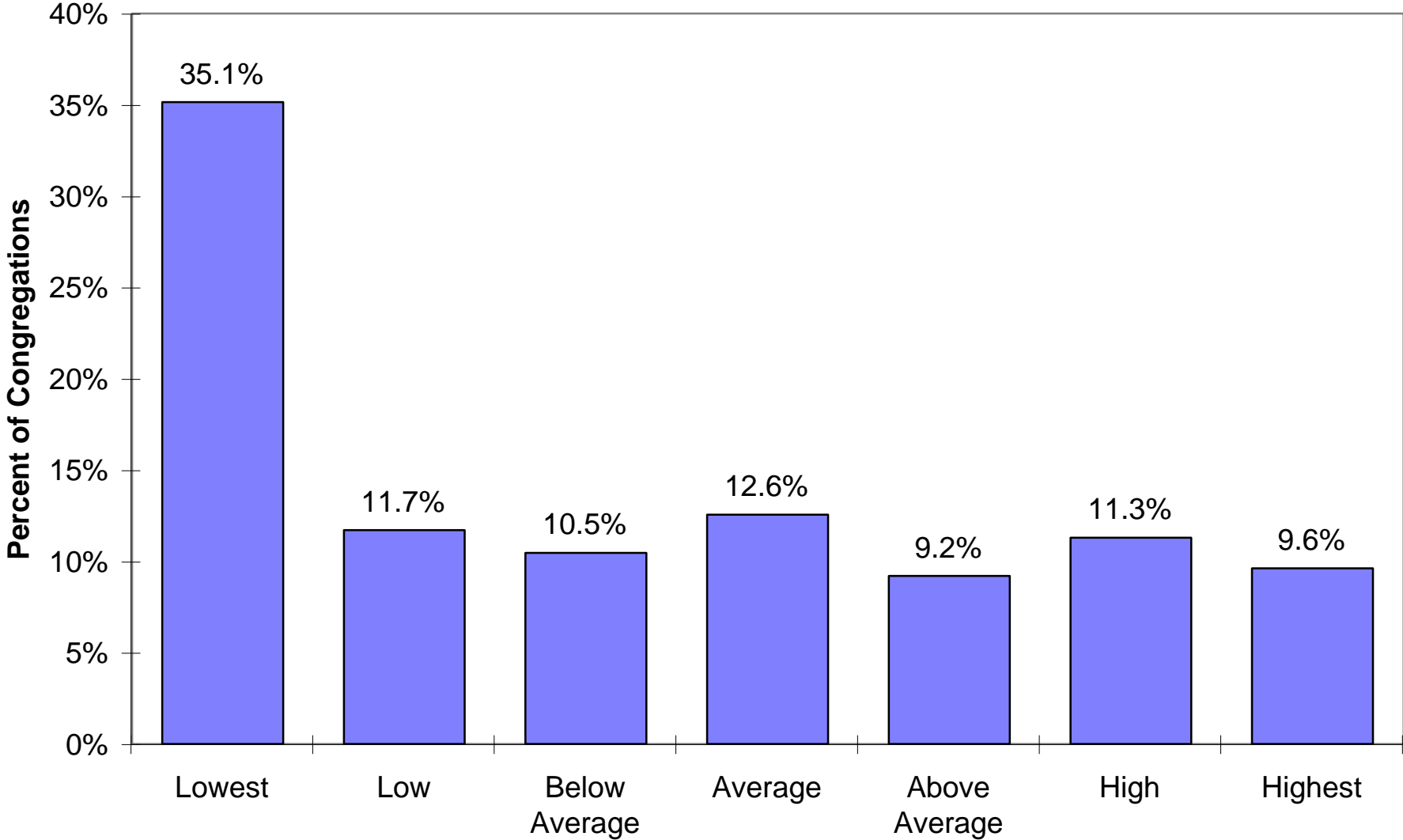
The average average attendance for African American congregations is 78 compared with 145 for the whole ELCA.

2002 Current Operating Expenses of 238 ELCA African American Congregations



The average current operating expenses for African American congregations is \$115,263 compared with \$153,353 for the whole ELCA.

Average Family Income* of the Neighborhoods of 239 ELCA African American Congregations for 2001



The average family income for Africal American congregation ZIP Codes is \$56,127 compared with \$65,579 for the whole ELCA.

*For all ELCA congregations, 14.3% fell in each of the seven socioeconomic categories.